

POULSBO WATERFRONT DISTRICT ELIASON SQUARE RENOVATION



18804 Front Street, Poulsbo WA

North Kitsap's Premier Dining and Tourist Destination

Spaces from 1,186 to 3,010 square feet

Heated Outdoor Patio Available with Views to Liberty Bay and The Olympics

Across from Free City Parking lot and Waterfront Park

Project By:  **CHINOOK**
CONTRACTORS

Leasing Info:



FIRST AMERICAN
PROPERTIES, INC.

Steve Ruggiero (206) 780-4990 x2
steve@faponline.net

**Waterfront Park
Free Parking**



ELIASON SQUARE



ELIASON SQUARE

To Hwy 305

Free Parking

Waterfront Park



1. Western Red Brewing
2. Poulsbohemian Coffeehouse
3. Burrata Bistro
4. Mama's Armenian Kitchen
5. Valhol Brewing
6. Poulsbo Woodfired Pizza
7. Sluys Bakery
8. Dalla Baia
9. Casa Luna
10. Details Wine Bar
11. Brass Kracken Pub
12. Sogno di Vino
13. Green Light Diner
14. The Loft at Latitude
15. Slippery Pig Brewery
16. Juicy J's Smoked Burgers
17. Mora's Iced Creamery
18. Mori Sushi & Bento
19. Pho Kim Chi
20. Taqeria El Huarache
21. Chung's Teriyaki
22. Golden Lion Chinese
23. ChocMo Chocolatier & Cafe
24. Crabtree Kitchen + Bar
25. Blossom
26. Westside Pizza
27. Starbucks
28. Punjab Indian Cuisine
29. Mezcalito's Mexican
30. Cafe Cocina

**Free Public Parking
King Olaf Parking Lot
114 Stalls**

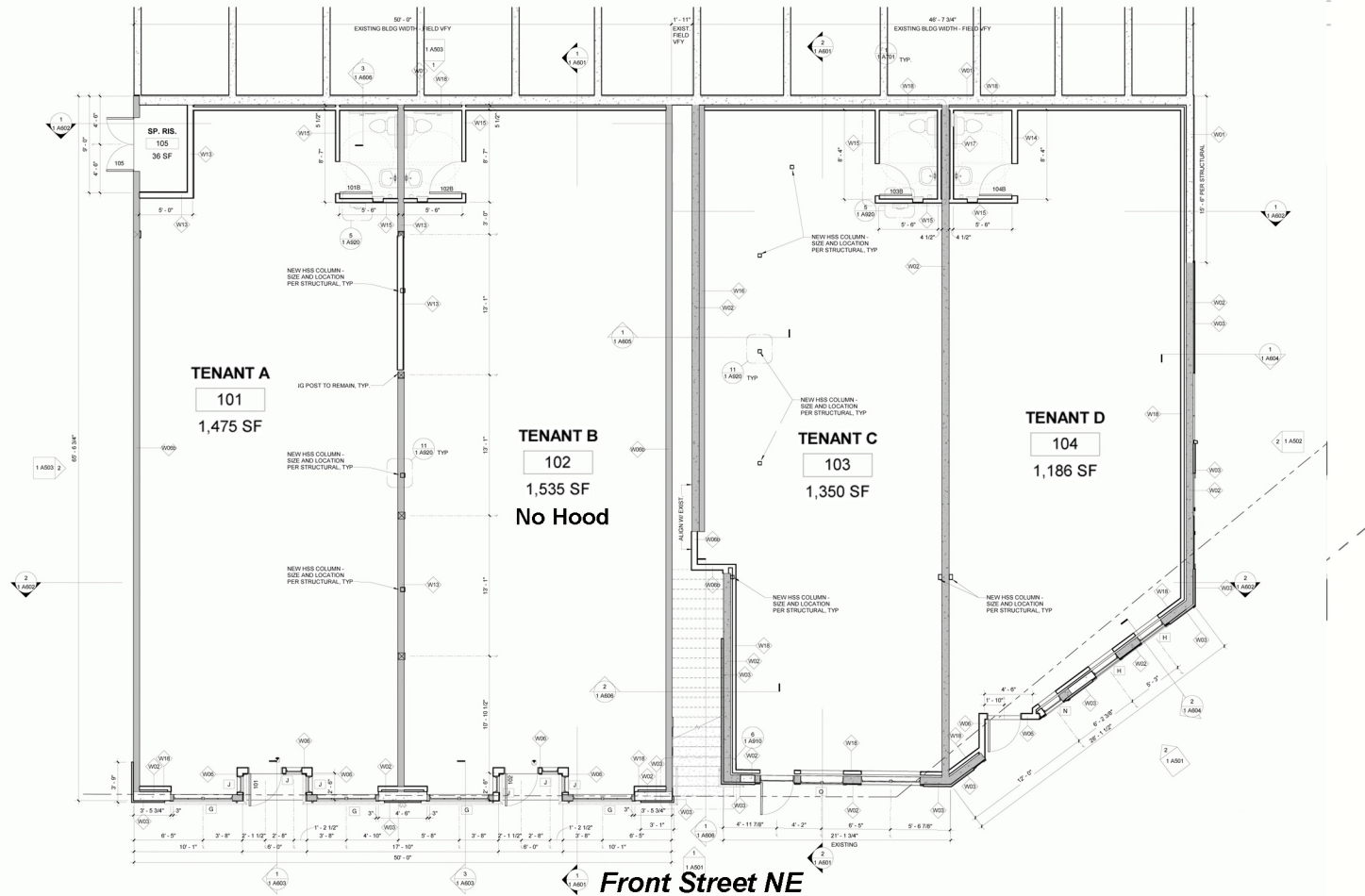
**Free Public Parking City
Hall Parking Garage
75 Stalls**

**Free Public Parking
Waterfront Parking Lot
219 Stalls**

ELIASON SQUARE

Downtown Poulsbo



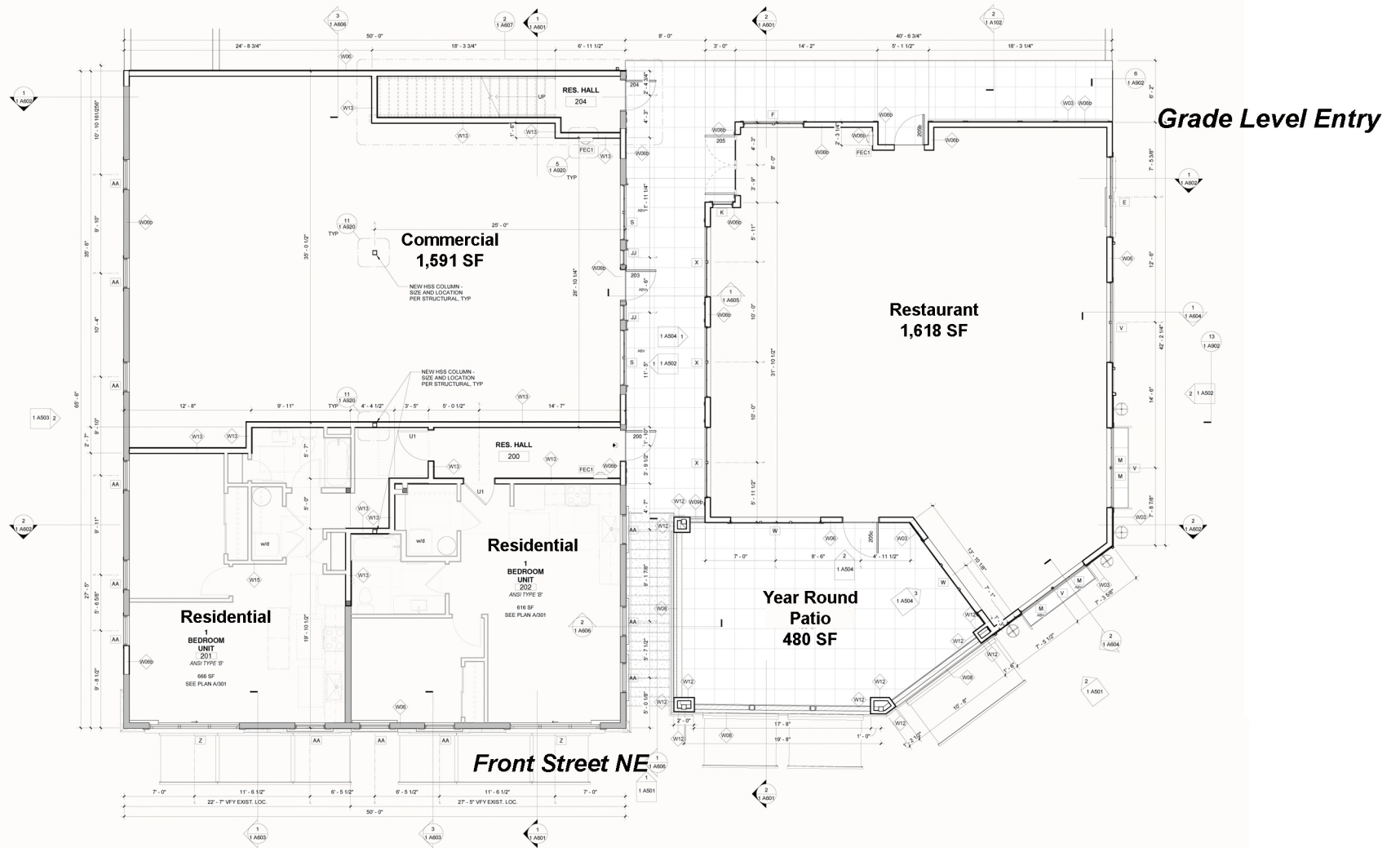


Retail facing Front Street

RESTAURANT READY

- Natural Gas
- Code Compliant Shaft for Type 1 Hood if Needed
- Grease Interceptor
- Mop Sink

Ground Floor



You Have The Opportunity To Influence The Design

- **Liberty Bay and Olympic Mountain Views**
- **Heated Covered Outdoor Patio For Year Round Dining**
- **400 amps**
- **Natural Gas**
- **Code Compliant Shaft for Type 1 Hood**
- **Grease Interceptor**
- **Mop Sink**

Second Level



The City of Poulsbo, “Little Norway”, hugs the shores of Liberty Bay and is the center of commerce for North Kitsap and a destination in it’s own right with a scenic setting, walkable downtown and vibrant restaurant scene. The Eliason Building was built in 1908 by Poulsbo’s first permanent settler Jorgen Eliason and has been home to several long term tenants including the Kitsap County Co-Op, Montgomery Ward and a 100 year run for the Masonic Lodge.

Poulsbo WA

