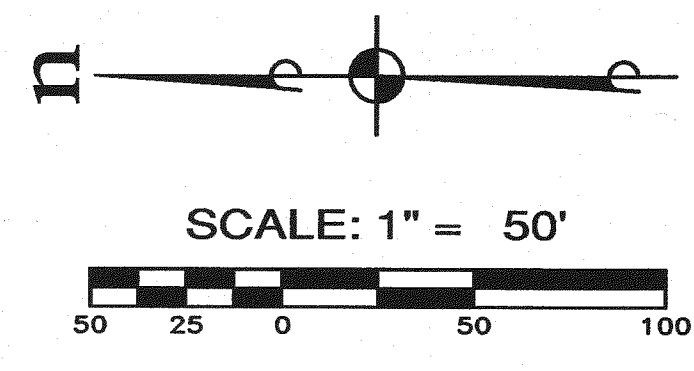
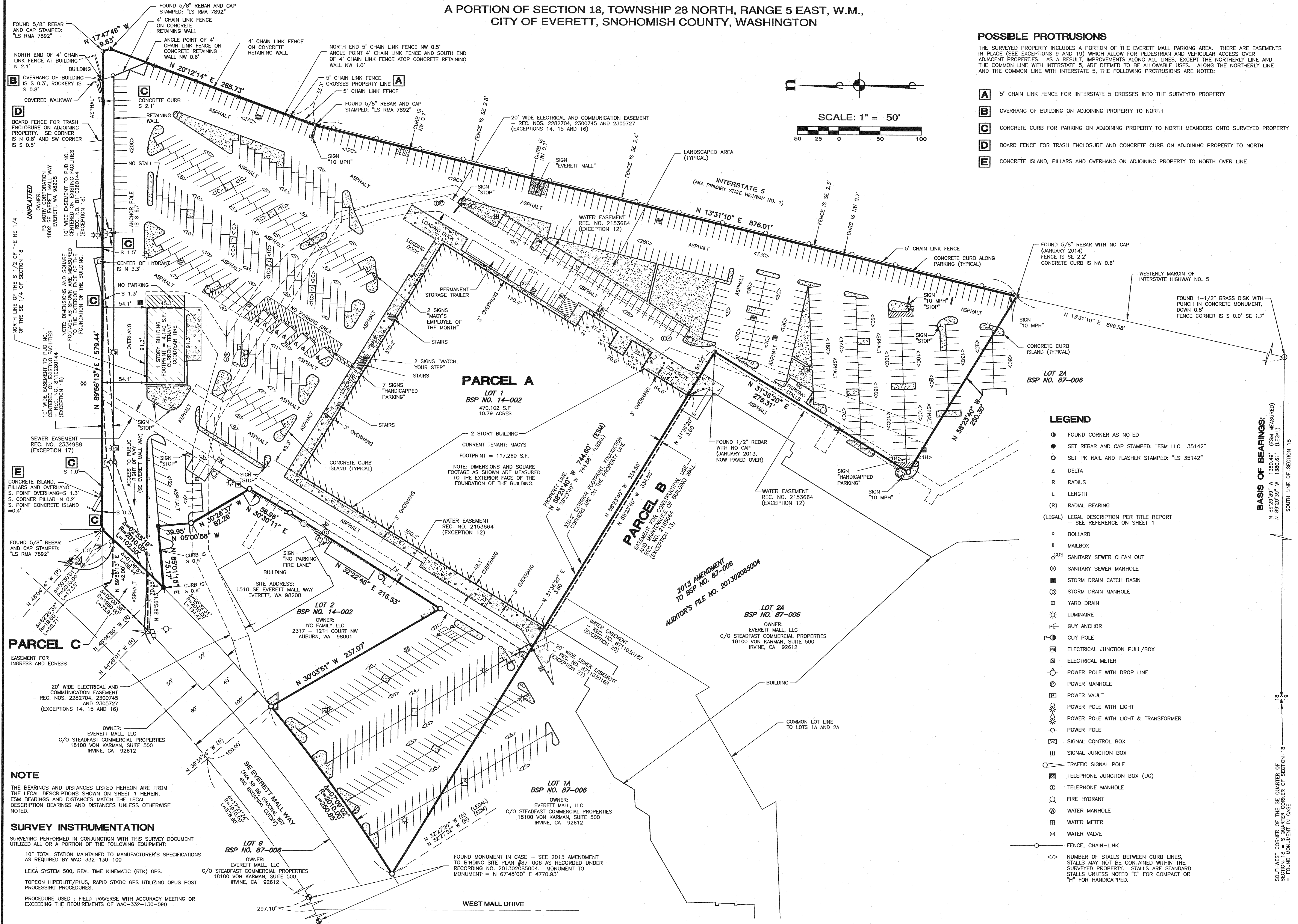


A PORTION OF SECTION 18, TOWNSHIP 28 NORTH, RANGE 5 EAST, W.M.,
CITY OF EVERETT, SNOHOMISH COUNTY, WASHINGTON



- POSSIBLE PROTRUSIONS**
- THE SURVEYED PROPERTY INCLUDES A PORTION OF THE EVERETT MALL PARKING AREA. THERE ARE EASEMENTS IN PLACE (SEE EXCEPTIONS 9 AND 19) WHICH ALLOW FOR PEDESTRIAN AND VEHICULAR ACCESS OVER ADJACENT PROPERTIES. AS A RESULT, IMPROVEMENTS ALONG ALL LINES, EXCEPT THE NORTHERLY LINE AND THE COMMON LINE WITH INTERSTATE 5, ARE DESIRED TO BE ALLOWABLE USES. ALONG THE NORTHERLY LINE AND THE COMMON LINE WITH INTERSTATE 5, THE FOLLOWING PROTRUSIONS ARE NOTED:
- A** 5' CHAIN LINK FENCE FOR INTERSTATE 5 CROSSES INTO THE SURVEYED PROPERTY
 - B** OVERHANG OF BUILDING ON ADJOINING PROPERTY TO NORTH
 - C** CONCRETE CURB FOR PARKING ON ADJOINING PROPERTY TO NORTH MEANDERS ONTO SURVEYED PROPERTY
 - D** BOARD FENCE FOR TRASH ENCLOSURE AND CONCRETE CURB ON ADJOINING PROPERTY TO NORTH
 - E** CONCRETE ISLAND, PILLARS AND OVERHANG ON ADJOINING PROPERTY TO NORTH OVER LINE



- LEGEND**
- FOUND CORNER AS NOTED
 - SET REBAR AND CAP STAMPED: "ESM LLC 35142"
 - SET PK NAIL AND FLASHER STAMPED: "LS 35142"
 - Δ DELTA
 - R RADIUS
 - L LENGTH
 - (R) RADIAL BEARING
 - (LEGAL) LEGAL DESCRIPTION PER TITLE REPORT - SEE REFERENCE ON SHEET 1
 - BOLLARD
 - MAILBOX
 - ⊙ SANITARY SEWER CLEAN OUT
 - ⊙ SANITARY SEWER MANHOLE
 - ⊙ STORM DRAIN CATCH BASIN
 - ⊙ STORM DRAIN MANHOLE
 - ⊙ YARD DRAIN
 - ⊙ LUMINAIRE
 - ⊙ GUY ANCHOR
 - ⊙ GUY POLE
 - ⊙ ELECTRICAL JUNCTION PULL/BOX
 - ⊙ ELECTRICAL METER
 - ⊙ POWER POLE WITH DROP LINE
 - ⊙ POWER MANHOLE
 - ⊙ POWER VAULT
 - ⊙ POWER POLE WITH LIGHT
 - ⊙ POWER POLE WITH LIGHT & TRANSFORMER
 - ⊙ POWER POLE
 - ⊙ SIGNAL CONTROL BOX
 - ⊙ SIGNAL JUNCTION BOX
 - ⊙ TRAFFIC SIGNAL POLE
 - ⊙ TELEPHONE JUNCTION BOX (UG)
 - ⊙ TELEPHONE MANHOLE
 - ⊙ FIRE HYDRANT
 - ⊙ WATER MANHOLE
 - ⊙ WATER METER
 - ⊙ WATER VALVE
 - FENCE, CHAIN-LINK
 - <7> NUMBER OF STALLS BETWEEN CURB LINES. STALLS MAY NOT BE CONTAINED WITHIN THE SURVEYED PROPERTY. STALLS ARE STANDARD STALLS UNLESS NOTED "C" FOR COMPACT OR "H" FOR HANDICAPPED.

NOTE

THE BEARINGS AND DISTANCES LISTED HEREON ARE FROM THE LEGAL DESCRIPTIONS SHOWN ON SHEET 1 HEREIN. ESM BEARINGS AND DISTANCES MATCH THE LEGAL DESCRIPTION BEARINGS AND DISTANCES UNLESS OTHERWISE NOTED.

SURVEY INSTRUMENTATION

SURVEYING PERFORMED IN CONJUNCTION WITH THIS SURVEY DOCUMENT UTILIZED ALL OR A PORTION OF THE FOLLOWING EQUIPMENT:

10" TOTAL STATION MAINTAINED TO MANUFACTURER'S SPECIFICATIONS AS REQUIRED BY WAC-332-130-100

LEICA SYSTEM 500, REAL TIME KINEMATIC (RTK) GPS.

TOPCON HIPERLITE/PLUS, RAPID STATIC GPS UTILIZING OPUS POST PROCESSING PROCEDURES.

PROCEDURE USED: FIELD TRAVERSE WITH ACCURACY MEETING OR EXCEEDING THE REQUIREMENTS OF WAC-332-130-090

BASIS OF BEARINGS:

N 89°29'39" W 1380.49' (ESM MEASURED)
N 89°29'39" W 1380.61' (LEGAL)

SOUTH LINE OF SECTION 18

REVISIONS		
NO.	DESCRIPTION/DATE	BY
0	ORIGINAL SURVEY	CAF
1	APRIL 2014	CAF

4-14-14

ESM CONSULTING ENGINEERS
35400 8th Ave S, Suite 205
Federal Way, WA 98003
www.esmllc.com

ESM CONSULTING ENGINEERS
35400 8th Ave S, Suite 205
Federal Way, WA 98003
www.esmllc.com

LLC
Civil Engineering
Public Works
Land Surveying
Project Management
Land Planning
Landscape Architecture

3773 INVESTMENTS AND VOP ASSOCIATES
MACY'S AT EVERETT MALL
ALTA/ACSM LAND TITLE SURVEY
WASHINGTON
SNOHOMISH COUNTY

JOB NO.: 1807-001-014
DWG. NAME: ALTA-02
DESIGNED BY:
DRAWN BY: RFG/CAF
CHECKED BY: CAF
DATE: 2014-04-14
DATE OF PRINT:

2 OF 2 SHEETS