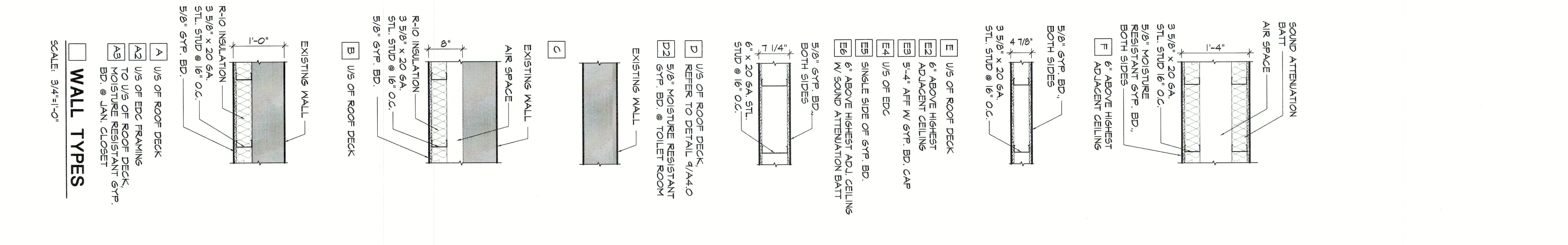


FLOOR PLAN CODED NOTES

- NOTE:** ITEMS MARKED WITH AN ASTERISK ARE TO BE PURCHASED FROM VENDOR REFER TO VENDOR LIST AND RESPONSIBILITY SCHEDULE.
- CONCRETE SIDEWALK WITH HANDICAP CURB CUT. REFER TO SHELL DRAWINGS.
 - NOT USED.
 - STAINLESS STEEL STOREFRONT BOLLARDS. REFER TO SHELL DRAWINGS.
 - STOREFRONT GLAZING. REFER TO SHELL DRAWINGS.
 - NOT USED.
 - BALLS (194" HIGH) COORDINATE VOLTAGE WITH VENDOR PRIOR TO ORDER.
 - 3/4" THICK PAINT GRADE PLYWOOD. INDICATED AS (---) MOUNTED TO GYPSUM BOARD WALLS IN CORRIDOR FROM 4" AFF TO 4'-4" AFF.
 - NOT USED.
 - 42" HIGH 5" DIA. STEEL PIPE BOLLARD #4 FINISH TUBE WITH FLOOR MOUNT BASE PLATE & ANCHORS. FILL WITH CONCRETE FOLLOWING INSTALLATION. PAINT SAFETY YELLOW.
 - 3/4" THICK FIRE RETARDANT PLYWOOD (DO NOT PAINT) INDICATED AS (---) MOUNTED TO GYPSUM BOARD WALLS IN WAREHOUSE FROM FLOOR TO 4'-0" AFF (NO BASE).
 - INTERNAL RAINWATER CONDUCTORS. REFER TO SHELL DRAWINGS.
 - NOT USED.
 - 2" x 2" x 44" HIGH STAINLESS STEEL CORNER GUARDS HELD 4" AFF. REFER TO DETAIL 7/44.0.
 - NOT USED.

- ITEMS MARKED WITH AN ASTERISK ARE TO BE PURCHASED FROM VENDOR REFER TO VENDOR LIST AND RESPONSIBILITY SCHEDULE.
- 48" HIGH STAINLESS STEEL COLUMN BEAR TYPE OF SALES AREA COLUMNS ONLY; REFER TO DETAIL 6/44.0 1 SHEET ALL FOR FINISHES.
- 2" x 4" FIRE-RETARDANT WOOD FLOORING. AT 6'-6" AFF AND 1'-0" AFF TO TOP. REFER TO DETAIL 14/44.0.
- WIRE GRID OVER FIXTURES. THIS AREA REFER TO DETAIL 2/44.0.
- PADLOCKS FOR LOCK-UP CASE IN WAREHOUSE FIXTURES (WAREHOUSE FIXTURES PROVIDED BY OFFICEMAX). PROVIDE (3) - 3" PADLOCKS FOR LOCK-UPS.
- SPRINKLER RISER ROOM.
- ELECTRICAL DISTRIBUTION CENTER (EDC.) ABOVE. SEE DETAIL 5/44.0.
- PREFABRICATED EDC. LADDER.
- FIXED STEEL ROOF ACCESS LADDER.
- LAMINATED SHELVES ABOVE AND PLUGWELD MOUNTED AT 1'-6" AFF TO CENTER. REFER TO DETAIL 1/44.0 8' GROMMETS AT CENTER.
- DOCK PIT LEVELERS. REFER TO SHELL DRAWINGS.
- ELECTRIC DOCK LIGHT MOUNT AT 6'-6" AFF.
- NOT USED.
- PARTIAL HEIGHT LAMINATED WALL 3'-6" AFF. REFER TO DETAIL 7/44.0.

FLOOR PLAN
SCALE: 1/8"=1'-0"



HERSCHMANN ARCHITECTS INCORPORATED
 23001 BERRY ROAD, SUITE 400
 CLEVELAND, OH 44128
 TEL: (216) 223-3200
 FAX: (216) 223-3210
 www.herschmannarchitects.com

OfficeMax ADVANTAGE NEXT
OLHAVA RETAIL CENTER
POULSBO, WASHINGTON
STORE #1433

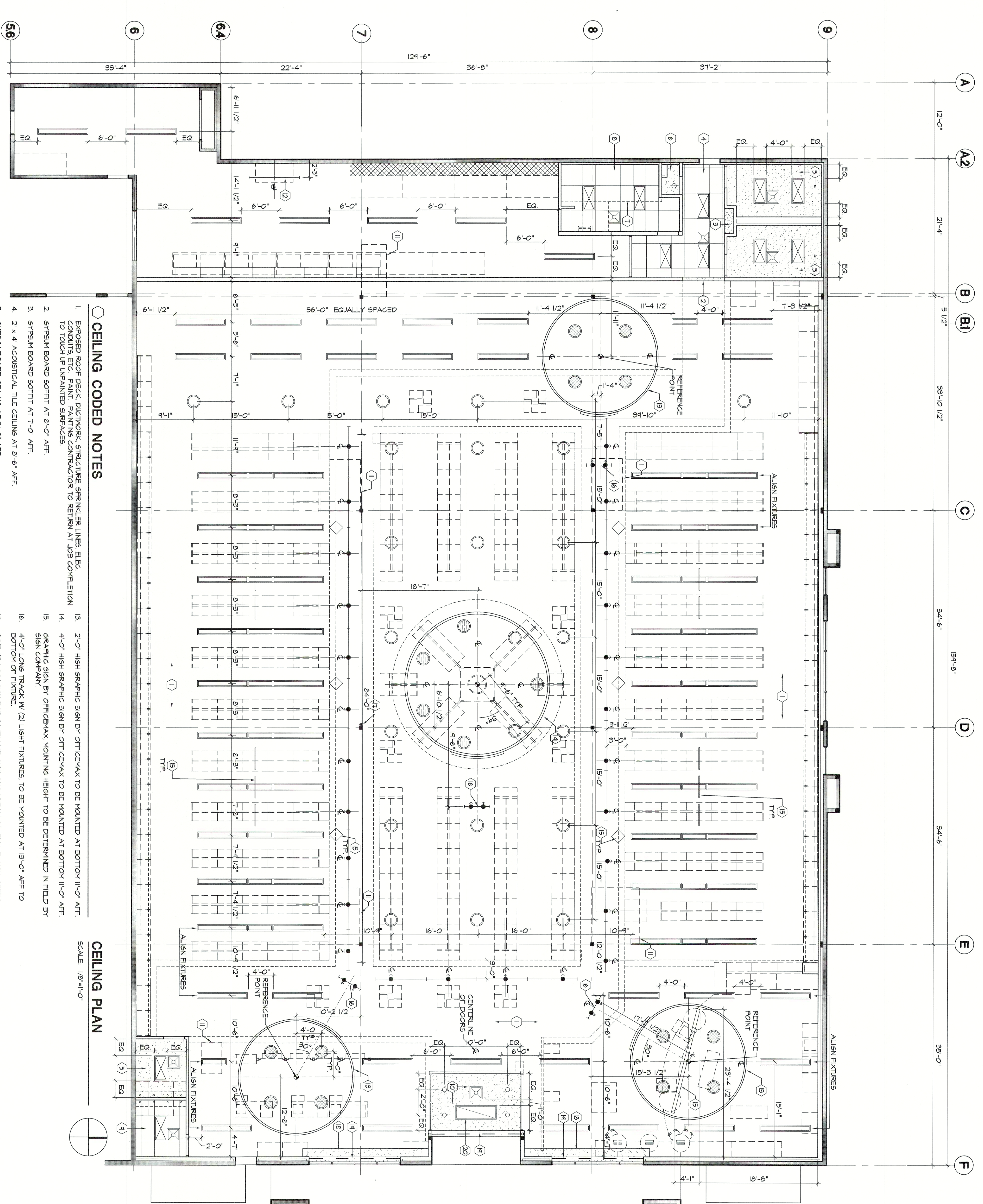
Design and construction documents are prepared and remain the property of Herschmann Architects. The use of these documents for purposes other than those intended is prohibited without expressed written consent of Herschmann Architects.

Date: _____ Issue: _____
 06/04/07 BID/FERMIT

Drawn By: GLS
 Project No.: 10374

J:\prototype\Omax\Advantage 1\1-ADVANTAGE NEXT 18K ICURRENT\Advantage NEXT 18K 200 A110.dwg
 J:\prototype\Omax\Advantage 1\1-ADVANTAGE NEXT 18K ICURRENT\Advantage NEXT 18K 000 xref.dwg

A1.0



CEILING CODED NOTES

1. EXPOSED ROOF DECK DUCTWORK, SPRINKLER LINES, ELEC. CONDUITS, ETC. PAINT. PAINTING CONTRACTOR TO RETURN AT JOB COMPLETION TO TOUCH UP UNPAINTED SURFACES.
2. GYPSUM BOARD SOFFIT AT 8'-0" AFF.
3. GYPSUM BOARD SOFFIT AT 7'-0" AFF.
4. 2 x 4 ACOUSTICAL TILE CEILING AT 8'-6" AFF.
5. GYPSUM BOARD CEILING AT 8'-0" AFF.
6. GYPSUM BOARD CEILING AT 7'-6" AFF.
7. ELECTRICAL DISTRIBUTION CENTER (EDC) MOUNTED AT 8'-3" AFF TO BOTTOM.
8. 2 x 4 ACOUSTICAL TILE CEILING AT 7'-9" AFF AT LOUNGE REFER TO SECTION 9/A/1.
9. 2 x 4 ACOUSTICAL TILE CEILING AT 8'-0" AFF.
10. GYPSUM BOARD CEILING AT 12'-0" AFF.
11. LOCATION OF ROOF TOP UNIT ABOVE. REFER TO MECHANICAL DRAWINGS FOR ROOF TOP SPECIFICATIONS.
12. STRIP FIXTURES TO BE MOUNTED AT 11'-0" AFF.
13. 2'-0" HIGH GRAPHIC SIGN BY OFFICEMAX TO BE MOUNTED AT BOTTOM 11'-0" AFF.
14. 4'-0" HIGH GRAPHIC SIGN BY OFFICEMAX TO BE MOUNTED AT BOTTOM 11'-0" AFF.
15. GRAPHIC SIGN BY OFFICEMAX MOUNTING HEIGHT TO BE DETERMINED IN FIELD BY SIGN COMPANY.
16. 4'-0" LONG TRACK W/ (2) LIGHT FIXTURES TO BE MOUNTED AT 13'-0" AFF TO BOTTOM OF FIXTURE.
17. STRIP UP LOCATION FOR SATELLITE DISH AND WIZAK SATELLITE DISH. REFER TO DETAIL 2/A/1.
18. GYPSUM BOARD SOFFIT AT 12'-0" AFF. REFER TO SECTION 9/A/1.
19. 6" GRILLE SLOT IN SOFFIT.
20. RECESSED CEILING MOUNTED CABINET HEATER- SEE MECHANICAL DRAWINGS.

CEILING PLAN

SCALE: 1/8"=1'-0"

J:\prototype\Omax\Advantage 11\ADVANTAGE NEXT 18K (CURRENT)\Advantage NEXT 18K 202 A2.0.dwg
 J:\prototype\Omax\Advantage 11\ADVANTAGE NEXT 18K (CURRENT)\Advantage NEXT 18K 000 xref.dwg

Design and construction documents are prepared by the Architect under the supervision of the Professional Engineer. The site documents for purposes other than the specific project named herein is without the consent of the Architect. Any reproduction or use of these documents without the written consent of the Architect is prohibited.

| Date | Issue |
|----------|------------|
| 06.04.07 | BID/FERMIT |

Drawn By: GLS
 Project No.: 10974

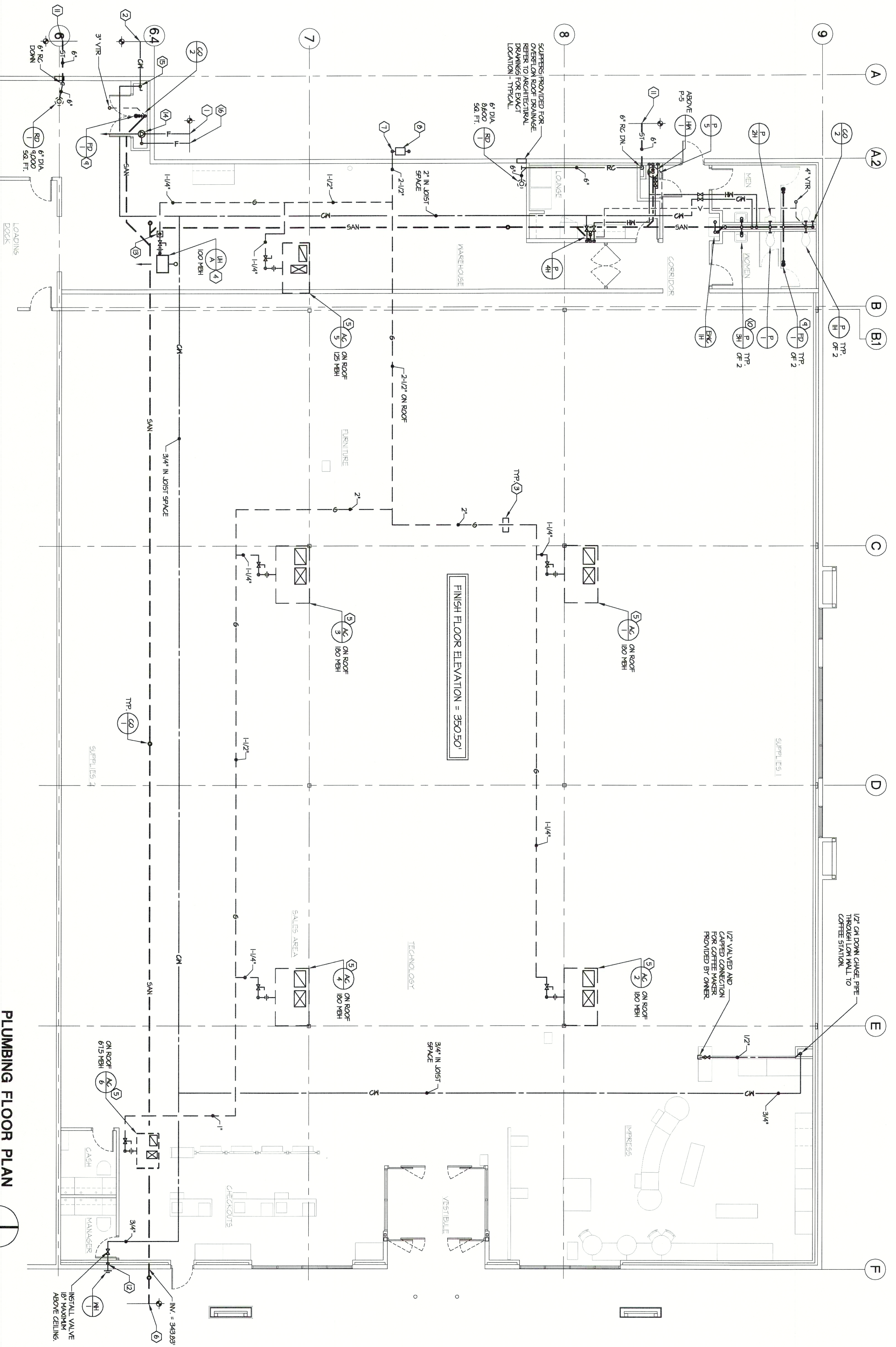
OfficeMax ADVANTAGE NEXT

OLHAVA RETAIL CENTER
 POULSBO, WASHINGTON
 STORE #1433

HERSCHMAN ARCHITECTS
 INCORPORATED

25601 EMERY ROAD, SUITE 400
 CLEVELAND, OH 44128
 TEL: (216) 223-3200
 FAX: (216) 223-3210
 www.herschmanarchitects.com

A2.0



DRAINS, CLEANOUTS & MISC. ITEMS

| MARK | ITEM | MAKE | MODEL | LOCATION | SIZE | BODY | TOP | REMARKS |
|------|--------------|------|---------------|------------|----------|-----------|---------------|---------------------------------------------------------------------------------------|
| FD-1 | FLOOR DRAIN | JS | 3095-A SERIES | SEE PLAN | AS NOTED | CAST IRON | NICKEL BRONZE | NICKEL BRONZE STRAINER AND 1/2" TRAP POWER |
| CD-1 | CLEANOUT | JS | 4020 SERIES | FLOOR TYPE | AS NOTED | CAST IRON | NICKEL BRONZE | |
| CD-2 | CLEANOUT | JS | 4402 SERIES | FLOOR TYPE | AS NOTED | CAST IRON | NICKEL BRONZE | WITH STAINLESS STEEL ACCESS COVER AS REQUIRED |
| WH-1 | WALL HYDRANT | JS | 3502GT SERIES | MALL TYPE | AS NOTED | BRONZE | NICKEL BRONZE | |
| RD-1 | ROOF DRAIN | JS | 5000 SERIES | EXTERIOR | 3/4" | BRONZE | NICKEL BRONZE | NON-FREEZE WITH VACUUM BREAKER, 3/4" NPT. OUTLET, 3/4" INLET AND NICKEL BRONZE FINISH |
| | | | | SEE PLAN | AS NOTED | CAST IRON | ALUMINUM | WITH DECK CLAMP, ALUMINUM DOME AND DRAIN RECEIVER |

WATER HEATER

| MARK | ITEM | MAKE | TANK | FUEL | INPUT | RECOVERY | OPERATING | ELECTRIC | REMARKS |
|------|--------------|------------|---------|--------|-------|-----------------|-----------|----------|--------------------------------------|
| WH-1 | WATER HEATER | A.O. SMITH | ELC-455 | ELECT. | 15 KW | 6.5 GPM @ 100 F | 110 F | 120/160 | 11P RELIEF VALVE MATS NO. 100L-4-125 |

ELECTRIC WATER COOLERS

| MARK | ITEM | MAKE | MODEL | TYPE | NAME | CAPACITY | COMPRESS | CONDENSER | WAKE POWER | ELECTRIC | REMARKS |
|-------|--------------|----------------|---------|--------------|-----------|----------|-----------------|------------|------------|----------|------------------------------------------------------|
| EW-1H | WATER COOLER | HALSETT TAYLOR | HVDBL-6 | WALL MOUNTED | BH-ELECT. | 50 GPM | 6.6 GPM @ 100 F | AIR COOLED | 1/5 | 120/160 | BARBERS FREE WITH WALL HANGER PLATE COLOR BY REQUEST |

PLUMBING FLOOR PLAN



NOTE: A. REFER TO SPECIFICATIONS FOR SEISMIC VIBRATION CONTROL INFORMATION.

PLUMBING FIXTURES

| MARK | ITEM | MAKE | MODEL | TRIM | TRAP | STOPS | WAGTE | CONNECTIONS | REMARKS |
|------|-------------|----------|---------|----------|----------|----------|-------|-------------|----------------------------------------------------------------------------------------------------------------|
| F-1 | FLOOR DRAIN | AMERICAN | 2251103 | SLOAN 62 | INTERVAL | INTERVAL | 4" | 1" | MALL LINK, SLOAN 62 OPTIMA PLUS BATTERY POWERED FLUSH VALVE WITH COMMERCIAL GRADE OPEN FRONT SEAT. SEE NOTE #9 |
| F-2 | FLOOR DRAIN | AMERICAN | 2251103 | SLOAN 62 | INTERVAL | INTERVAL | 4" | 2" | MALL LINK, SLOAN 62 OPTIMA PLUS BATTERY POWERED FLUSH VALVE WITH COMMERCIAL GRADE OPEN FRONT SEAT. SEE NOTE #9 |
| F-3 | FLOOR DRAIN | AMERICAN | 6601212 | SLOAN 62 | INTERVAL | INTERVAL | 2" | 1" | MALL LINK, SLOAN 62 OPTIMA PLUS BATTERY POWERED FLUSH VALVE MOUNTED AT HANDICAPPED HEIGHT |
| F-4 | FLOOR DRAIN | AMERICAN | 6601212 | SLOAN 62 | INTERVAL | INTERVAL | 2" | 1" | MALL LINK, SLOAN 62 OPTIMA PLUS BATTERY POWERED FLUSH VALVE MOUNTED AT HANDICAPPED HEIGHT |
| F-5 | FLOOR DRAIN | AMERICAN | 2282403 | SLOAN 62 | INTERVAL | INTERVAL | 2" | 1" | MALL LINK, SLOAN 62 OPTIMA PLUS BATTERY POWERED FLUSH VALVE MOUNTED AT HANDICAPPED HEIGHT |
| F-6 | FLOOR DRAIN | AMERICAN | 2282403 | SLOAN 62 | INTERVAL | INTERVAL | 2" | 1" | MALL LINK, SLOAN 62 OPTIMA PLUS BATTERY POWERED FLUSH VALVE MOUNTED AT HANDICAPPED HEIGHT |
| F-7 | FLOOR DRAIN | AMERICAN | 2282403 | SLOAN 62 | INTERVAL | INTERVAL | 2" | 1" | MALL LINK, SLOAN 62 OPTIMA PLUS BATTERY POWERED FLUSH VALVE MOUNTED AT HANDICAPPED HEIGHT |
| F-8 | FLOOR DRAIN | AMERICAN | 2282403 | SLOAN 62 | INTERVAL | INTERVAL | 2" | 1" | MALL LINK, SLOAN 62 OPTIMA PLUS BATTERY POWERED FLUSH VALVE MOUNTED AT HANDICAPPED HEIGHT |
| F-9 | FLOOR DRAIN | AMERICAN | 2282403 | SLOAN 62 | INTERVAL | INTERVAL | 2" | 1" | MALL LINK, SLOAN 62 OPTIMA PLUS BATTERY POWERED FLUSH VALVE MOUNTED AT HANDICAPPED HEIGHT |
| F-10 | FLOOR DRAIN | AMERICAN | 2282403 | SLOAN 62 | INTERVAL | INTERVAL | 2" | 1" | MALL LINK, SLOAN 62 OPTIMA PLUS BATTERY POWERED FLUSH VALVE MOUNTED AT HANDICAPPED HEIGHT |

NOTES:
 1. METAL SERVICE SHUTOFF & CHECK VALVES, COCKS, STOPS, AIR CLOSING, VACUUM BREAKERS, AND SAFETY DEVICES SHALL BE INSTALLED AS SHOWN. VACUUM BREAKERS SHALL BE INSTALLED ABOVE SOLID CEILING.
 2. METAL SERVICE SHUTOFF & CHECK VALVES SHALL BE INSTALLED ABOVE SOLID CEILING.
 3. Proposed fixtures to be 1/4" copper plate with cleanout and befit from plate.
 4. STOPS TO BE COCKED IN AND 1/2" ANGLE VALVE WITH COCKED IN AND BEFIT FROM PLATE.
 5. ALL DRAIN AND WATER SERVICE TO LAVATORIES TO BE INSTALLED WITH HAND LAMINATED INSULATION KIT BY TREBERO.
 6. WITH FLAT HOSE AND BRACKET. TOP HOOK SHIPERS GARD AND 1/2" HIGH STAINLESS STEEL WALL GARD.
 7. SINK TO BE MOUNTED FLUSH WITH WALLS AND SILICONE SEALANT APPLIED WHERE SINK MEETS WALL.
 8. SINK TO BE MOUNTED FLUSH WITH WALLS AND SILICONE SEALANT APPLIED WHERE SINK MEETS WALL.
 9. PROVIDE FLOOR MOUNTED CARRIER, 1/2" 3/8" COMPACT VERTICAL FINISH SUPPORT, CHD SERIES FOR WATER CLOSERS.
 10. SLOAN 62 811-B AND 8800-1 FLUSH VALVES ARE TO BE PURCHASED THROUGH BAY'S SECURITY, VENDOR #20.

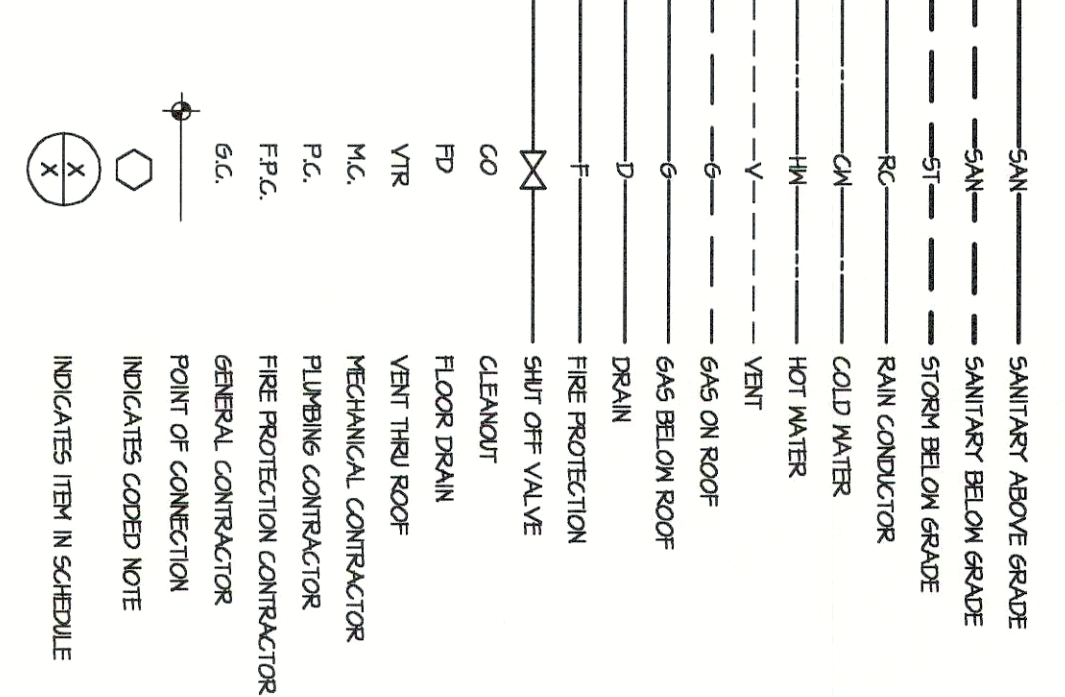
PLUMBING CODED NOTES

1. 6" INCHING FIRE PROTECTION SERVICE. P.F.2. TO BE FROM HYDRAULIC CALCULATIONS TO VERIFY SIZE REQUIRED. REFER TO DETAIL ON DRAWING H2.
2. 2" INCHING DOMESTIC WATER SERVICE.
3. PIPING SUPPORT ON ROOF REFER TO DETAIL ON DRAWING H2.
4. PROVIDE HILL SIZE GAS COCK, UNION AND DIRT LEG FOR GAS SUPPLY TO UNIT HEATER. ALL GAS PIPING AND ACCESSORIES SHALL NOT EXTEND BELOW THE BOTTOM OF THE UNIT.
5. PROVIDE HILL SIZE GAS COCK, UNION AND DIRT LEG TO GAS FIBER EQUIPMENT.
6. 4" SANITARY SEWER COORDINATE SIZE LOCATION AND INVERT WITH CIVIL DRAWINGS.
7. ROUTE 2-1/2" GAS LINE UP TIGHT TO WALL AND ON TO ROOF AS INDICATED. OFFSET AROUND PARAPET AS REQUIRED.
8. INCHING GAS SERVICE AND GAS VENTS PER LOCAL GAS COMPANY REQUIREMENTS. CONNECTIONS TO 102/160 DISTRIBUTION PRESSURE RATED METERS - 1" N.P. TUBING CONTRACTOR TO PAY ALL FEES FOR GAS SERVICE.
9. FLOOR DRAIN WITH TRAP POWER VALVE.
10. THERMOSTATIC TEMPERING VALVE BELOW LAVATORY, REFER TO DETAIL ON DRAWING H2.
11. SLOAN 62 COORDINATE INVERT AND CONTINUATION WITH CIVIL DRAWINGS.
12. 3/4" COLD WATER DOWN. PROVIDE AN ADDITIONAL 6" OF BATT INSULATION BETWEEN THE EXTERIOR WALL AND THE FLOOR. DO NOT DROP FINE DOWN EXTERIOR WALL OR IN ANY OTHER LOCATION SUBJECT TO FREEZING.
13. GAS PIPING DOWN THROUGH ROOF THROUGH PATE FIRE CAB. REFER TO DETAIL ON DRAWING H2.
14. SPRINKLER RISER WITH ALL U.L. REQUIRED APPROXIMATES, INCLUDING BACKFLOW PREVENTER AND ALARM CHECK VALVE.
15. 2" DOMESTIC WATER UP THROUGH FLOOR WITH SHUT-OFF VALVE.
16. 4" TO SITE FIRE DEPARTMENT CONNECTION. REFER TO AND COORDINATE WITH CIVIL DRAWINGS.

SEISMIC DATA

DESIGN OF MECHANICAL, ELECTRICAL AND PLUMBING EQUIPMENT RESTRAINT SYSTEMS FOR WIND / SEISMIC FORCES SPECIFIC FOR THIS PROJECT LOCATION SHALL BE BY MASON INDUSTRIES, INC. OR EQUAL MANUFACTURER AND AS REQUIRED FOR ALL APPLICABLE CODES.
 SEISMIC DESIGN CATEGORY - D
 SEISMIC USE GROUP - 1.0
 SEISMIC IMPORTANCE FACTOR - 1.0
 SITE CLASS - D
 REFER TO STRUCTURAL DRAWINGS FOR ADDITIONAL PROJECT SEISMIC DESIGN INFORMATION.

PLUMBING LEGEND



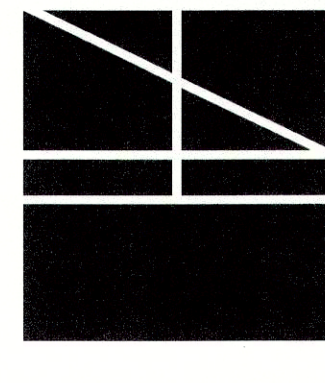
Design and construction documents are prepared by the professional engineer in accordance with the provisions of the Uniform Building Code. The user of these documents for purposes other than those intended is at their own risk. The user is advised that the engineer is not responsible for any errors or omissions in the documents. The user is advised that the engineer is not responsible for any errors or omissions in the documents. The user is advised that the engineer is not responsible for any errors or omissions in the documents.

Drawn By: AJH
 Project No.: 102174

OfficeMax ADVANTAGE NEXT
 OLHAVA RETAIL CENTER
 POULSBO, WASHINGTON
 STORE #1433

HERSCHMAN ARCHITECTS INCORPORATED
 2800 EMERY ROAD, SUITE 400
 CLEVELAND, OH 44128
 TEL (216) 223-3300
 FAX (216) 223-3210
 WWW.HERSCHMANARCHITECTS.COM

M1



OfficeMax
 ADVANTAGE NEXT
 OLHAVA RETAIL CENTER
 POULSBORO, WASHINGTON
 STORE #1433

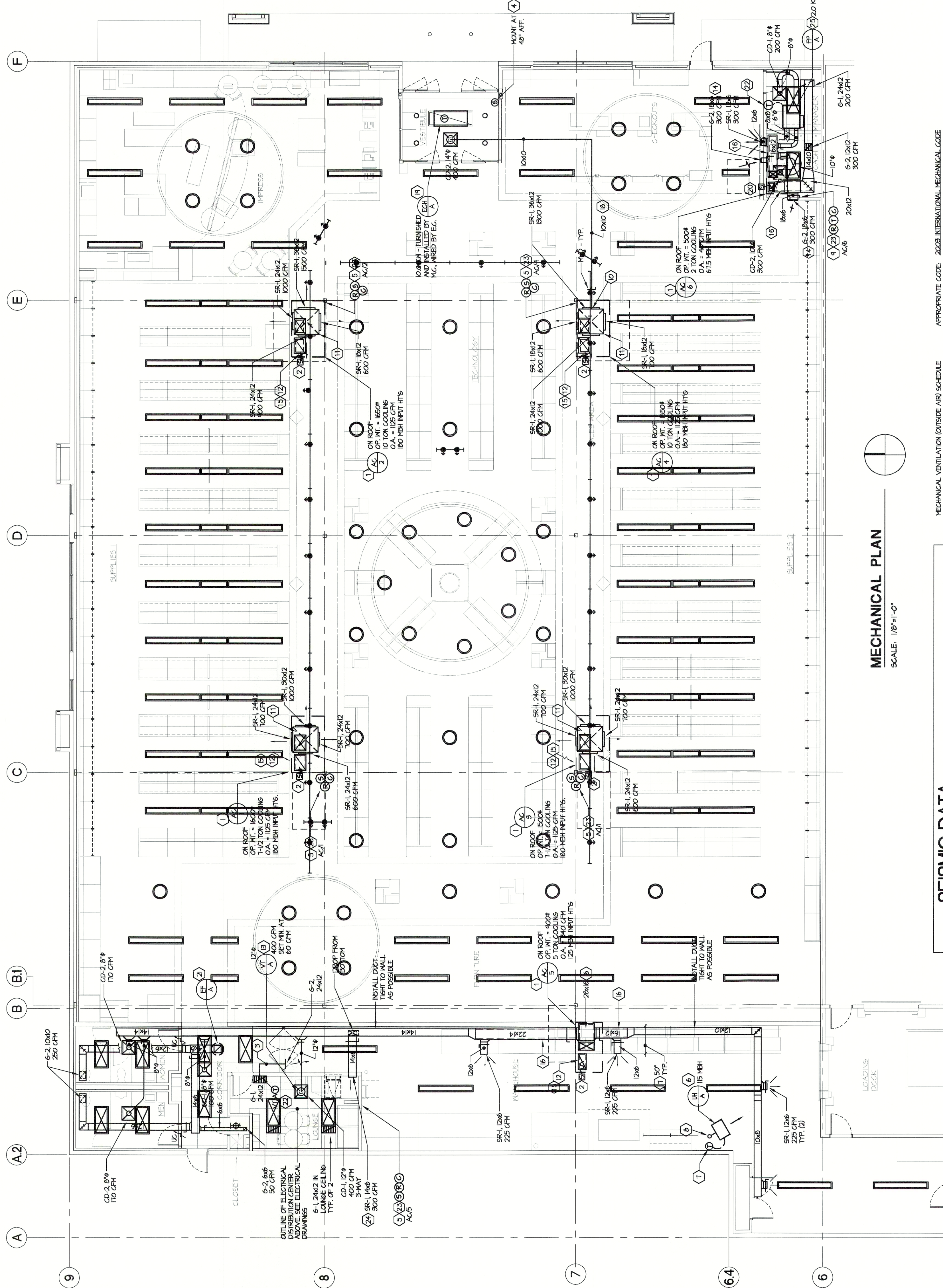
HERSCHMAN ARCHITECTS INCORPORATED
 2001 EMERY ROAD, SUITE 400
 CLEVELAND, OH 44128
 TEL: (216) 231-0000
 FAX: (216) 231-3100
 www.herschmanarchitects.com

M3

Design and construction documents to be prepared by the Architect under the direction of the Engineer. The Engineer shall be responsible for the design and construction of the mechanical systems. The Architect shall be responsible for the design and construction of the building envelope and interior finishes. The Engineer shall be responsible for the design and construction of the mechanical systems. The Architect shall be responsible for the design and construction of the building envelope and interior finishes.

Date: **06/04/07** ISSUE: **BID/PERMIT**

Drawn By: **MEF**
 Project No.: **102714**



MECHANICAL PLAN
 SCALE: 1/8"=1'-0"

SEISMIC DATA

DESIGN OF MECHANICAL, ELECTRICAL AND PLUMBING EQUIPMENT RESTRAINT SYSTEMS FOR WIND / SEISMIC FORCES SPECIFIC FOR THIS PROJECT LOCATION SHALL BE BY MASON INDUSTRIES, INC. OR EQUAL MANUFACTURER AND AS REQUIRED FOR ALL APPLICABLE CODES.

SEISMIC DESIGN CATEGORY - D
 SEISMIC USE GROUP - I.0
 SEISMIC IMPORTANCE FACTOR I_e - 1.0
 SITE CLASS - D

REFER TO STRUCTURAL DRAWINGS FOR ADDITIONAL PROJECT SEISMIC DESIGN INFORMATION.

NOTE:
 A. REFER TO SPECIFICATIONS FOR SEISMIC VIBRATION CONTROL INFORMATION.

APPROPRIATE CODE: 2003 INTERNATIONAL MECHANICAL CODE

| ROOM NAME | ROOM AREA (SQ. FT.) | CLASSIFICATION | NO. OF PERSONS PER 1000 SQ. FT. (Max. Area) | CFM/PERSON PER TABLE M-409.3 | REQUIRED O.A. | DESIGN O.A. |
|--------------|---------------------|----------------|---------------------------------------------|------------------------------|---------------|-------------|
| SALES | 15000 | RETAIL | 0.15 | 4500 | 4500 | 4500 |
| STOCK | 1000 | STORAGE | - | 20 | 40 | 40 |
| OFFICES | 160 | OFFICE | 1 | 20 | 40 | 40 |
| LOUNGE | 200 | KITCHEN | 20 | 4 | 60 | 60 |
| CORRIDOR | 160 | CORRIDOR | - | 0.05 | 4 | 10 |
| TOTAL | | | | | | 4900 |

| MENS TOILET | 125 | TOILET | 75 CFM/FIXTURE |
|---------------------------------------------------------------------|-----|--------------------------------|----------------|
| WOMENS TOILET <td>125</td> <td>TOILET <td>75 CFM/FIXTURE</td> </td> | 125 | TOILET <td>75 CFM/FIXTURE</td> | 75 CFM/FIXTURE |
| Total | | | 300 |

NOTE: MECHANICAL SYSTEMS SHALL BE CONTINUOUSLY OPERATIONAL DURING OPERATIONAL HOURS.

NOTE: SEE DRAWING M-4 FOR MECHANICAL CODED NOTES

CONTRACTOR MUST VERIFY ALL CLEARANCES AND DIMENSIONS IN FIELD

Mechanical Summary

Project Info: Project Address: olava Retail Center, Location: Poulsbo, WA, Applicant Name: Edward F. Hershey, Applicant Address: 2905 Emery Road, Wrenthamville, Ret., Ohio 44128, Applicant Phone: 214-292-4696

Project Description: Briefly describe mechanical system type and features. Includes Plans: Includes Plans

Compliance Option: Simple System, Complex System, System Analysis

Equipment Schedules: The following information is required to be incorporated with the mechanical equipment schedules on the plans. For projects without plans, fill in the required information below.

Cooling Equipment Schedule table with columns: Equip ID, Brand Name, Model No., Capacity, Total CFM, OSA CFM or Econo?, SEER of Econo?, Input Btu, Output Btu, Efficiency, Location

Heating Equipment Schedule table with columns: Equip ID, Brand Name, Model No., Capacity, Total CFM, OSA CFM or Econo?, COP, Input Btu, Output Btu, Efficiency, Location

Fan Equipment Schedule table with columns: Equip ID, Brand Name, Model No., CFM, Sp1, HP/BHP, Flow Control, Location of Service

Mechanical Permit Plans Checklist

Project Address: olava Retail Center, Date: 5/11/2007, Building Equipment on Plans: Indicate location of equipment on plans

Checklist items 1411 through 1458 covering HVAC requirements, ductwork, controls, and equipment specifications.

Mechanical Permit Plans Checklist

Project Address: olava Retail Center, Date: 5/11/2007, Building Equipment on Plans: Indicate location of equipment on plans

Checklist items 1411 through 1458 covering HVAC requirements, ductwork, controls, and equipment specifications.

Mechanical Permit Plans Checklist

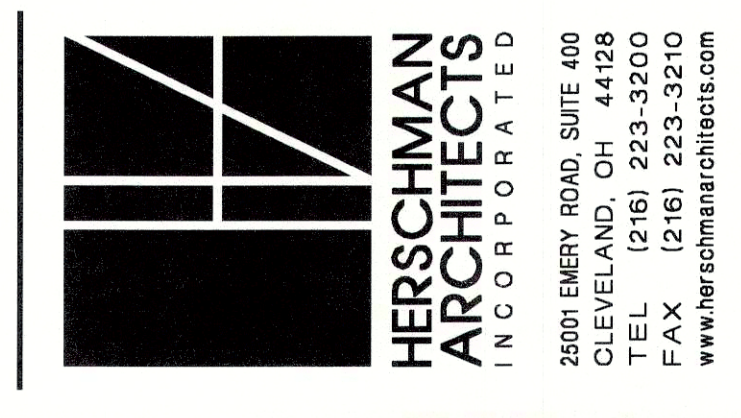
Project Address: olava Retail Center, Date: 5/11/2007, Building Equipment on Plans: Indicate location of equipment on plans

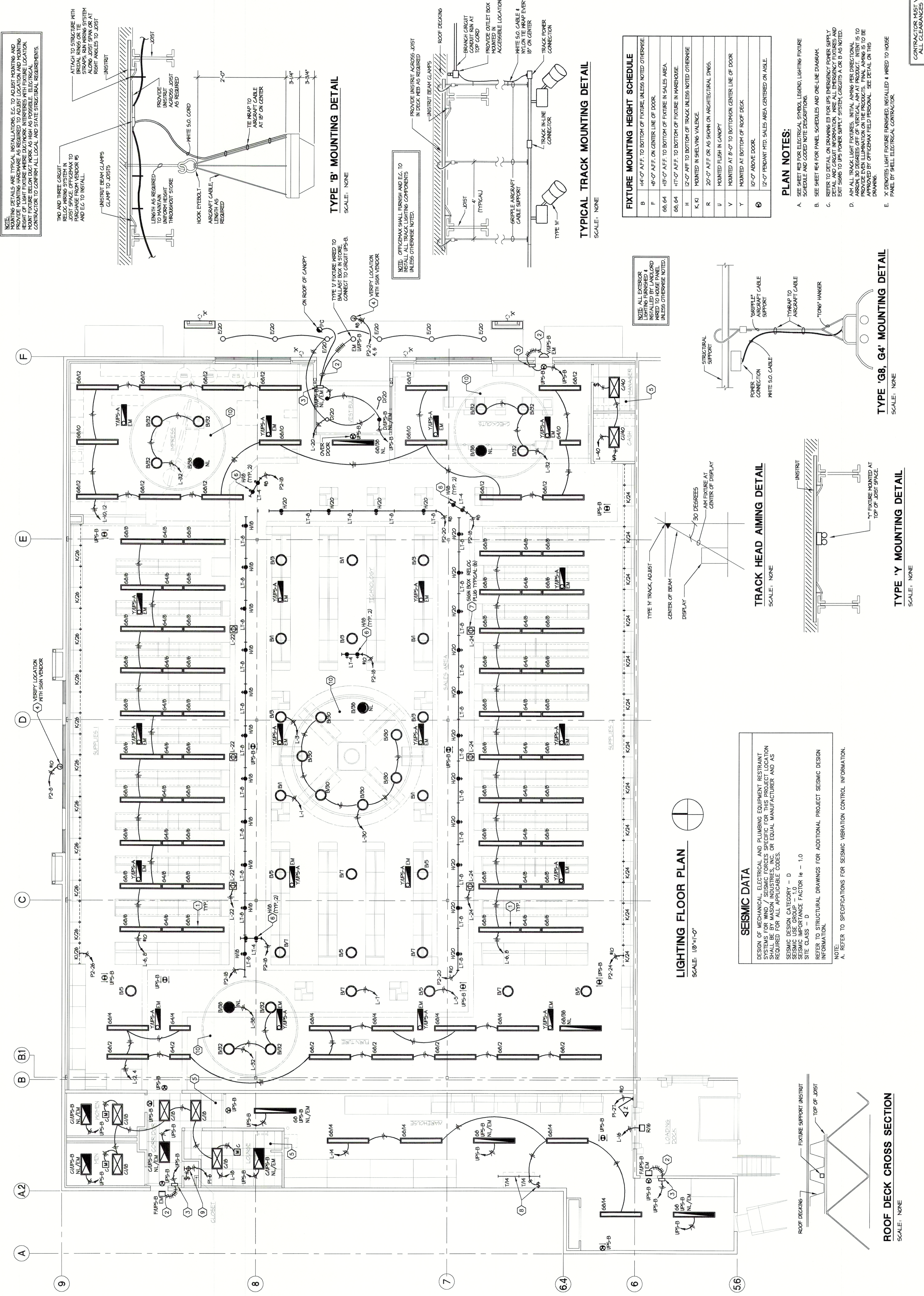
Checklist items 1411 through 1458 covering HVAC requirements, ductwork, controls, and equipment specifications.

Mechanical Permit Plans Checklist

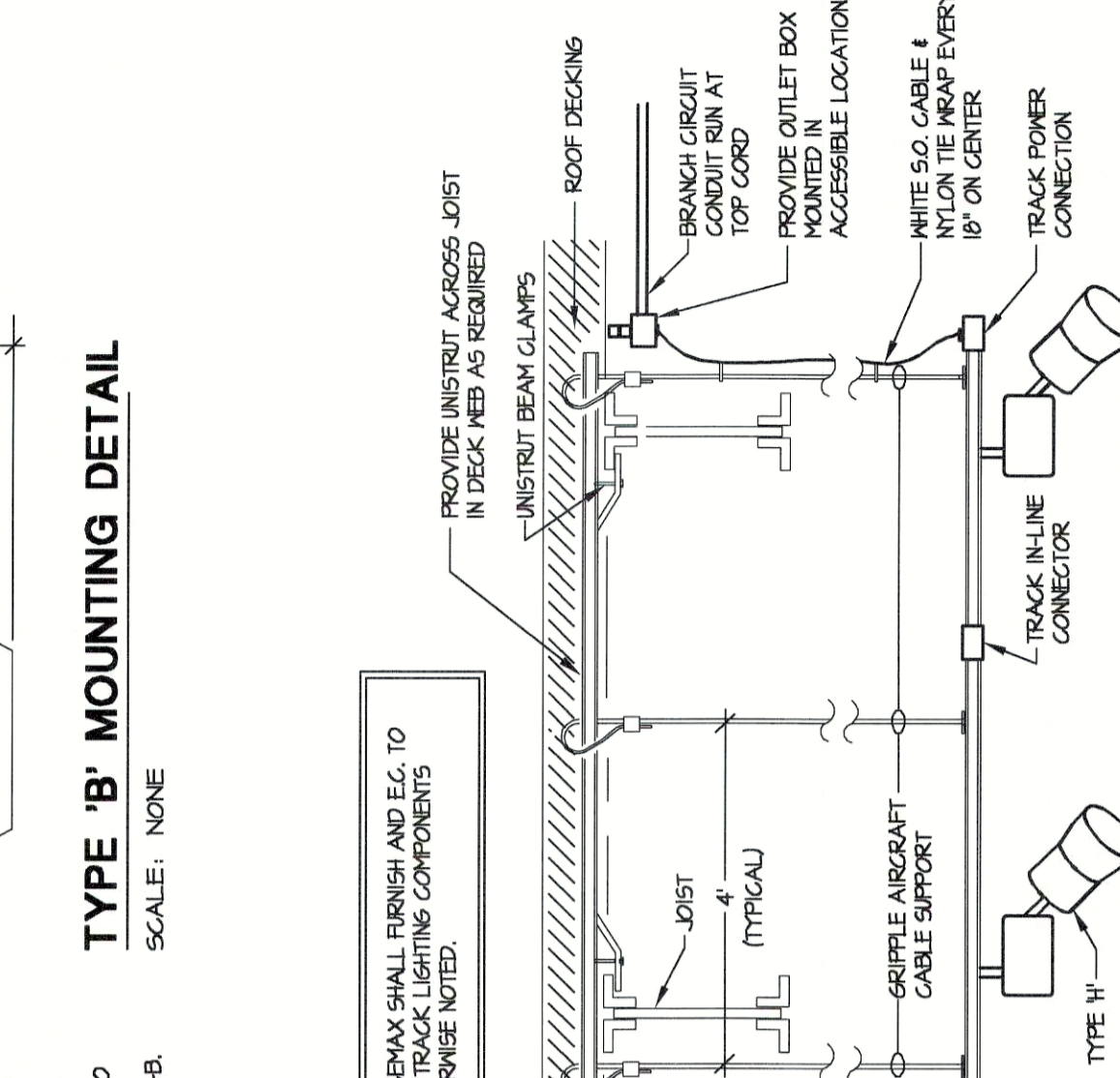
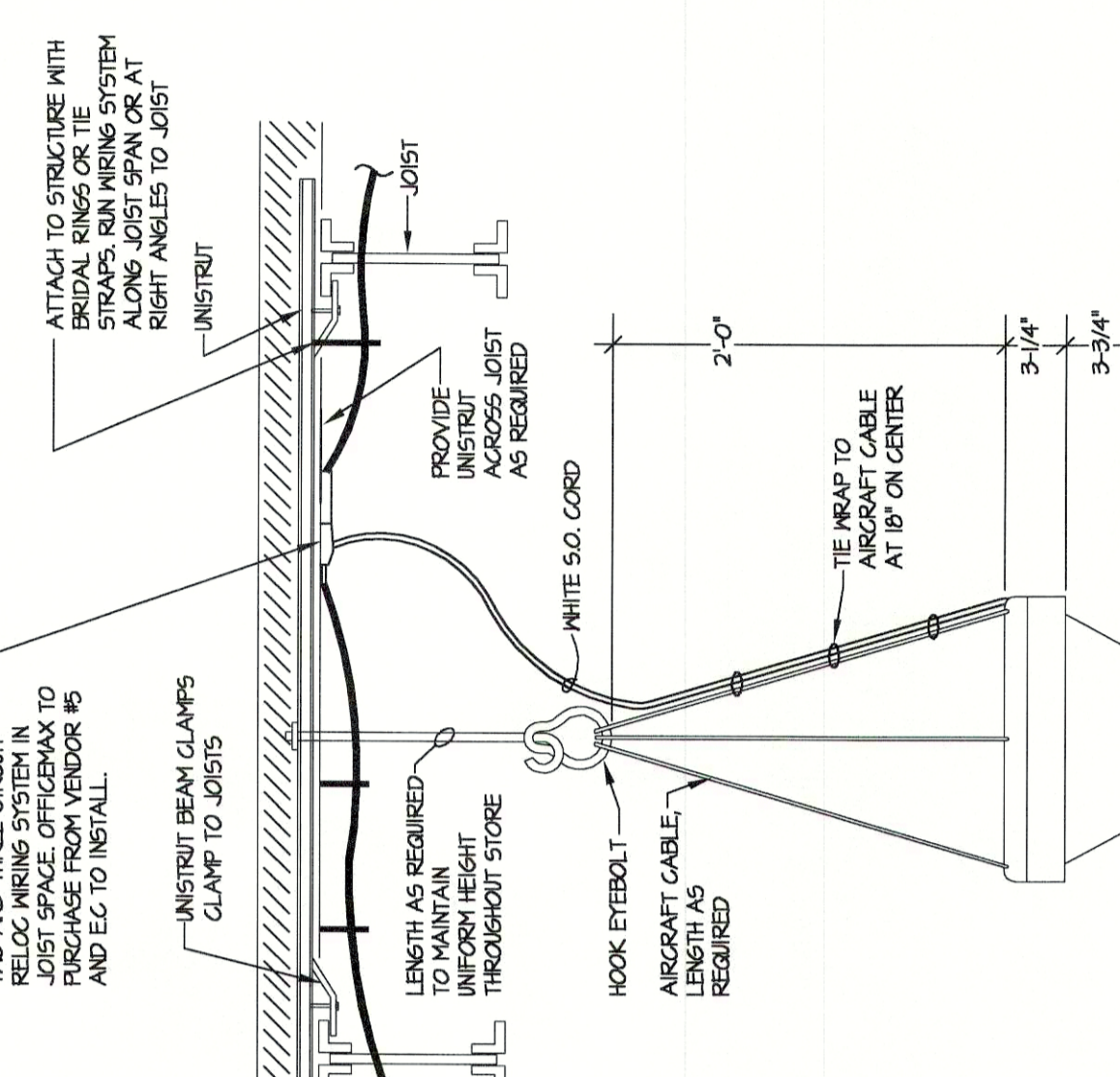
Project Address: olava Retail Center, Date: 5/11/2007, Building Equipment on Plans: Indicate location of equipment on plans

Checklist items 1411 through 1458 covering HVAC requirements, ductwork, controls, and equipment specifications.





NOTE: MOUNTING DETAILS ARE TYPICAL INSTALLATIONS. E.G. TO ADJUST MOUNTING AND PROVIDE MOUNTING HARDWARE AS REQUIRED TO ADJUST LOCATION AND MOUNTING HEIGHT. THE CONTRACTOR SHALL VERIFY THE LOCATION AND MOUNTING HEIGHT OF ALL FIXTURES TO CONFIRM ALL LOCAL AND STATE STRUCTURAL REQUIREMENTS.



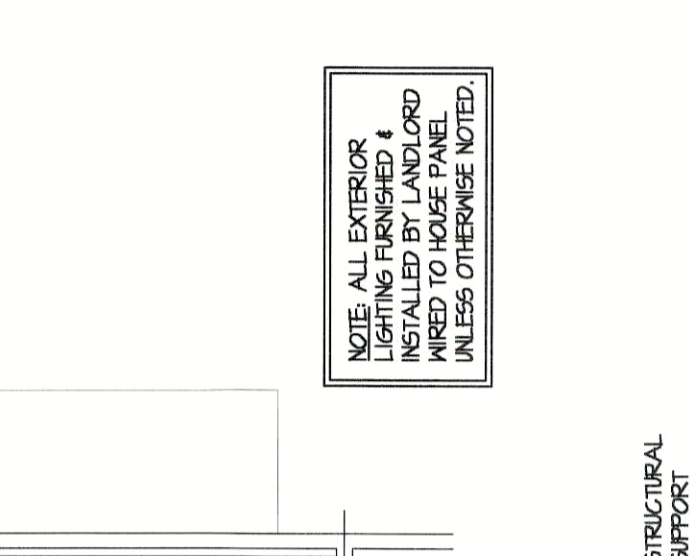
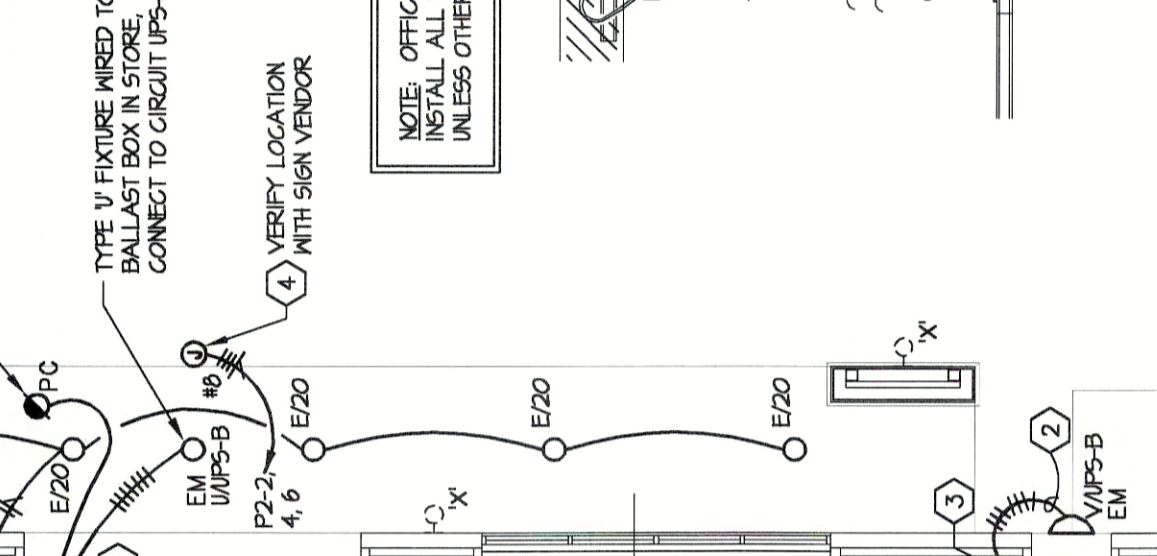
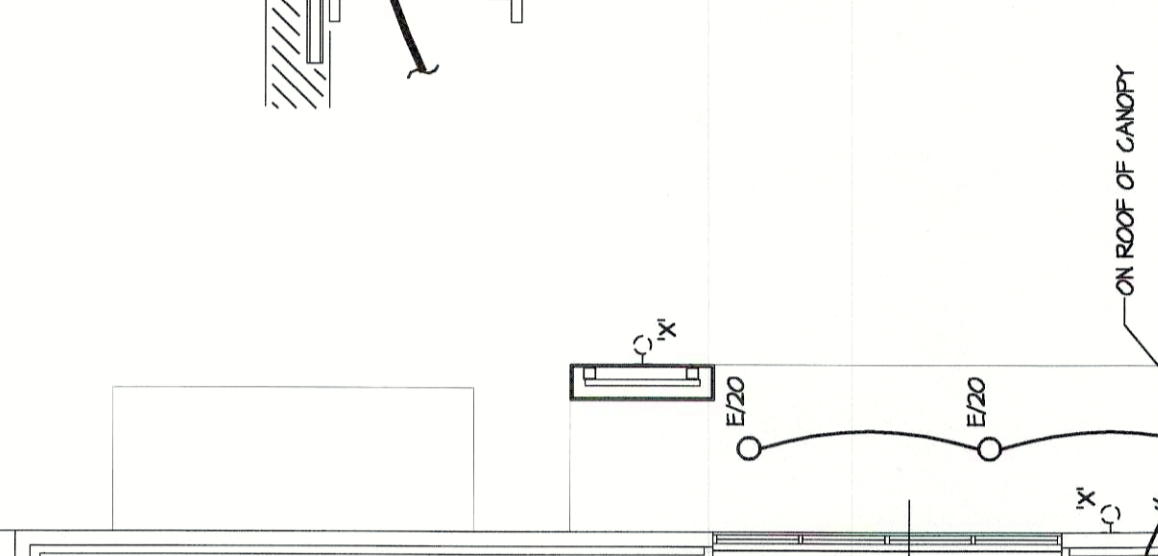
FIXTURE MOUNTING HEIGHT SCHEDULE

| | |
|----------|----------------------------------------------------------|
| B | 44'-0" AFF. TO BOTTOM OF FIXTURE, UNLESS NOTED OTHERWISE |
| F | 48'-0" AFF. ON CENTER LINE OF DOOR. |
| 60, 64 | 48'-0" AFF. TO BOTTOM OF FIXTURE IN SALES AREA |
| 60, 64 | 47'-0" AFF. TO BOTTOM OF FIXTURE IN WAREHOUSE |
| H, K, KI | 12'-0" AFF. TO BOTTOM OF TRACK, UNLESS NOTED OTHERWISE |
| R | 20'-0" AFF. OR AS SHOWN ON ARCHITECTURAL DWGS. |
| U | MOUNTED FLUSH IN CANOPY |
| Y | MOUNTED AT 8'-0" TO BOTTOM CENTER LINE OF DOOR |
| | MOUNTED AT BOTTOM OF TRACK |
| ⊗ | 10'-0" ABOVE DOOR |
| | 12'-0" PENDANT MTD. SALES AREA CENTERED ON AISLE. |

PLAN NOTES:

- SEE SHEET #EA FOR ELECTRICAL SYMBOL LEGEND, LIGHTING FIGURE SCHEDULE AND CODED NOTE DESCRIPTIONS.
- SEE SHEET #EA FOR PANEL SCHEDULES AND ONE-LINE DIAGRAM.
- REFER TO DETAIL ON DRAWING #B FOR UPS EMERGENCY POWER SUPPLY DETAIL AND CIRCUIT INFORMATION. WIRE ALL EMERGENCY FIXTURES AND EXIT SIGNS TO UPS POWER SUPPLY SYSTEM CIRCUITS A OR B AS NOTED.
- AIM ALL TRACK LIGHT FIXTURES, INITIAL AIMING PER DIRECTIONAL ARROWS 30 DEGREES OFF OF VERTICAL. AIM AT PRODUCT. INTENT IS TO PROVIDE LIGHT FIXTURES TO BE MOUNTED AT 18" MAX EVERY 18" ON CENTER. APPROVED BY OFFICEMAX FIELD PERSONNEL. SEE DETAIL ON THIS DRAWING.
- X: FIXTURES LIGHT FIXTURES FINISHED. INSTALLED 4 WIRE TO HOUSE. PANEL BY SHELL ELECTRICAL CONTRACTOR.

NOTE: ALL EXTERIOR LIGHTING FINISHED 4 WIRE TO HOUSE. WIRE TO HOUSE PANEL UNLESS OTHERWISE NOTED.



SEISMIC DATA

DESIGN OF MECHANICAL, ELECTRICAL AND PLUMBING EQUIPMENT RESTRAINT SYSTEMS FOR WIND / SEISMIC FORCES SPECIFIC FOR THIS PROJECT LOCATION SHALL BE BY MASON INDUSTRIES, INC. OR EQUAL, MANUFACTURER AND AS REQUIRED FOR ALL APPLICABLE CODES.

SEISMIC DESIGN CATEGORY - D
 SEISMIC USE GROUP - 1.0
 SEISMIC IMPORTANCE FACTOR (I_e) - 1.0
 SITE CLASS - D

REFER TO STRUCTURAL DRAWINGS FOR ADDITIONAL PROJECT SEISMIC DESIGN INFORMATION.

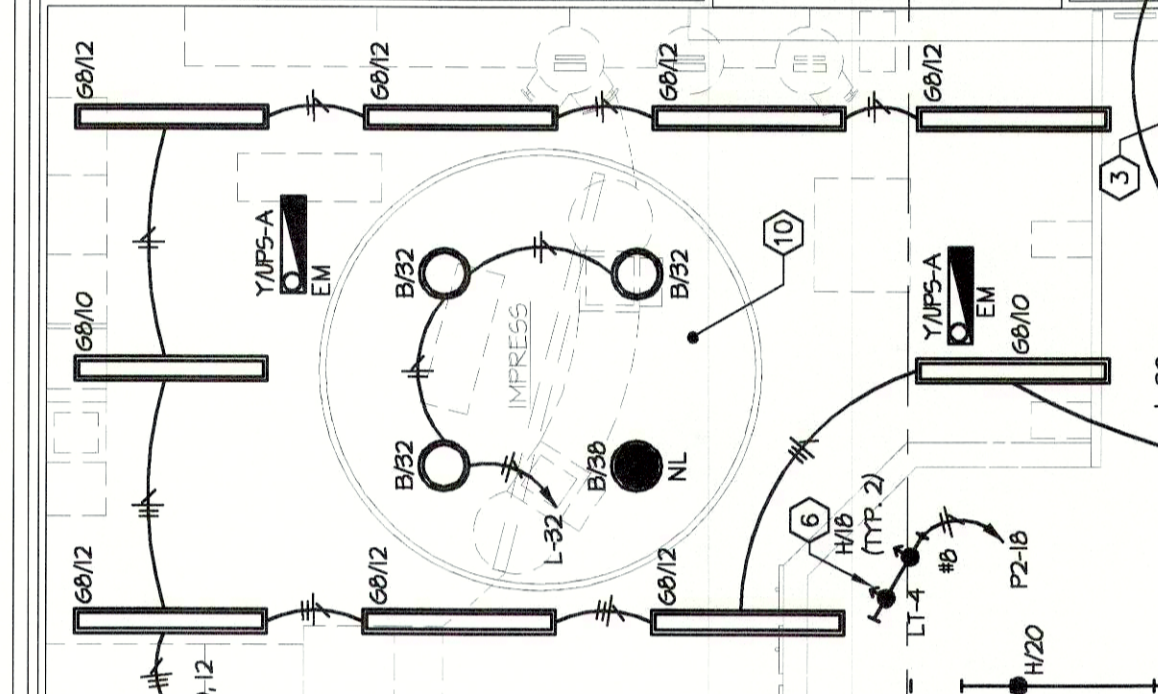
NOTE:
 A. REFER TO SPECIFICATIONS FOR SEISMIC VIBRATION CONTROL INFORMATION.

ROOF DECK CROSS SECTION
 SCALE: NONE

ROOF DECKING

FIXTURE SUPPORT INSTRUIT

TOP OF JOIST



LIGHTING FLOOR PLAN
 SCALE: 1/8"=1'-0"

FIXTURE MOUNTING HEIGHT SCHEDULE

| | |
|----------|----------------------------------------------------------|
| B | 44'-0" AFF. TO BOTTOM OF FIXTURE, UNLESS NOTED OTHERWISE |
| F | 48'-0" AFF. ON CENTER LINE OF DOOR. |
| 60, 64 | 48'-0" AFF. TO BOTTOM OF FIXTURE IN SALES AREA |
| 60, 64 | 47'-0" AFF. TO BOTTOM OF FIXTURE IN WAREHOUSE |
| H, K, KI | 12'-0" AFF. TO BOTTOM OF TRACK, UNLESS NOTED OTHERWISE |
| R | 20'-0" AFF. OR AS SHOWN ON ARCHITECTURAL DWGS. |
| U | MOUNTED FLUSH IN CANOPY |
| Y | MOUNTED AT 8'-0" TO BOTTOM CENTER LINE OF DOOR |
| | MOUNTED AT BOTTOM OF TRACK |
| ⊗ | 10'-0" ABOVE DOOR |
| | 12'-0" PENDANT MTD. SALES AREA CENTERED ON AISLE. |

CONTRACTOR MUST VERIFY ALL CLEARANCES AND DIMENSIONS IN FIELD

Design and construction documents shall be prepared in accordance with the provisions of the applicable building codes and standards in effect at the time of the design and construction of this project. The contractor shall be responsible for obtaining all necessary permits and approvals. The contractor shall be responsible for coordinating with all other trades and agencies. The contractor shall be responsible for protecting all existing conditions and utilities. The contractor shall be responsible for maintaining safety throughout the project. The contractor shall be responsible for keeping the project site clean and free of debris. The contractor shall be responsible for maintaining access to all areas of the project. The contractor shall be responsible for maintaining the project schedule. The contractor shall be responsible for maintaining the project budget. The contractor shall be responsible for maintaining the project quality. The contractor shall be responsible for maintaining the project safety. The contractor shall be responsible for maintaining the project security. The contractor shall be responsible for maintaining the project environment. The contractor shall be responsible for maintaining the project community. The contractor shall be responsible for maintaining the project legacy.

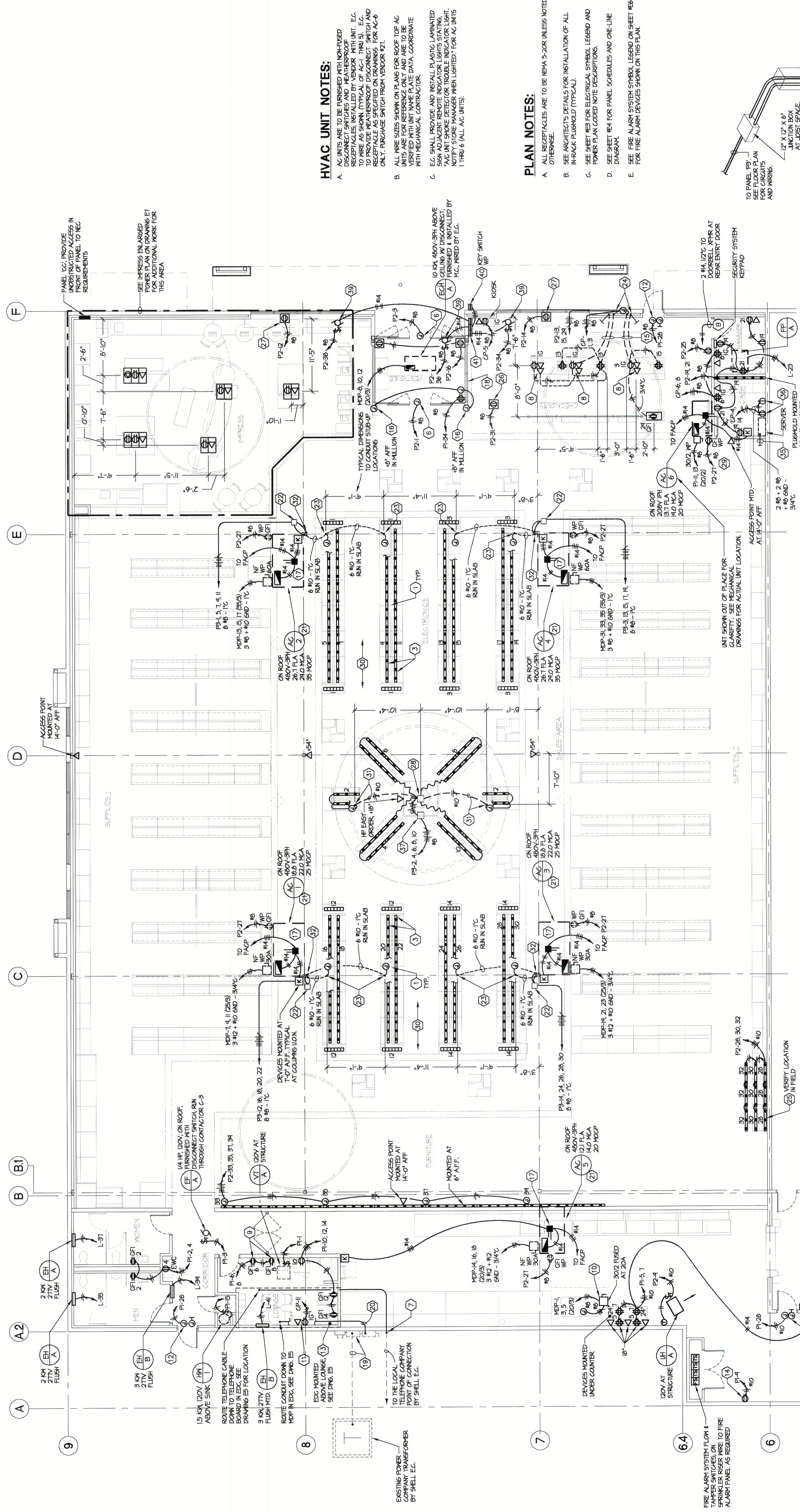
Date: 06/04/07
 ISSUE: BID/PERMIT

Drawn By: BEA
 Project No: 102714

OfficeMax[®] ADVANTAGE NEXT

OLHAVA RETAIL CENTER
 POULSBORO, WASHINGTON
 STORE #1433

HERSCHMAN ARCHITECTS
 IN CORPORATION
 28001 ENERGY ROAD, SUITE 400
 CLEVELAND, OH 44128
 TEL (216) 223-3200
 FAX (216) 223-3210
 www.herschmanarchitects.com



HVAC UNIT NOTES:

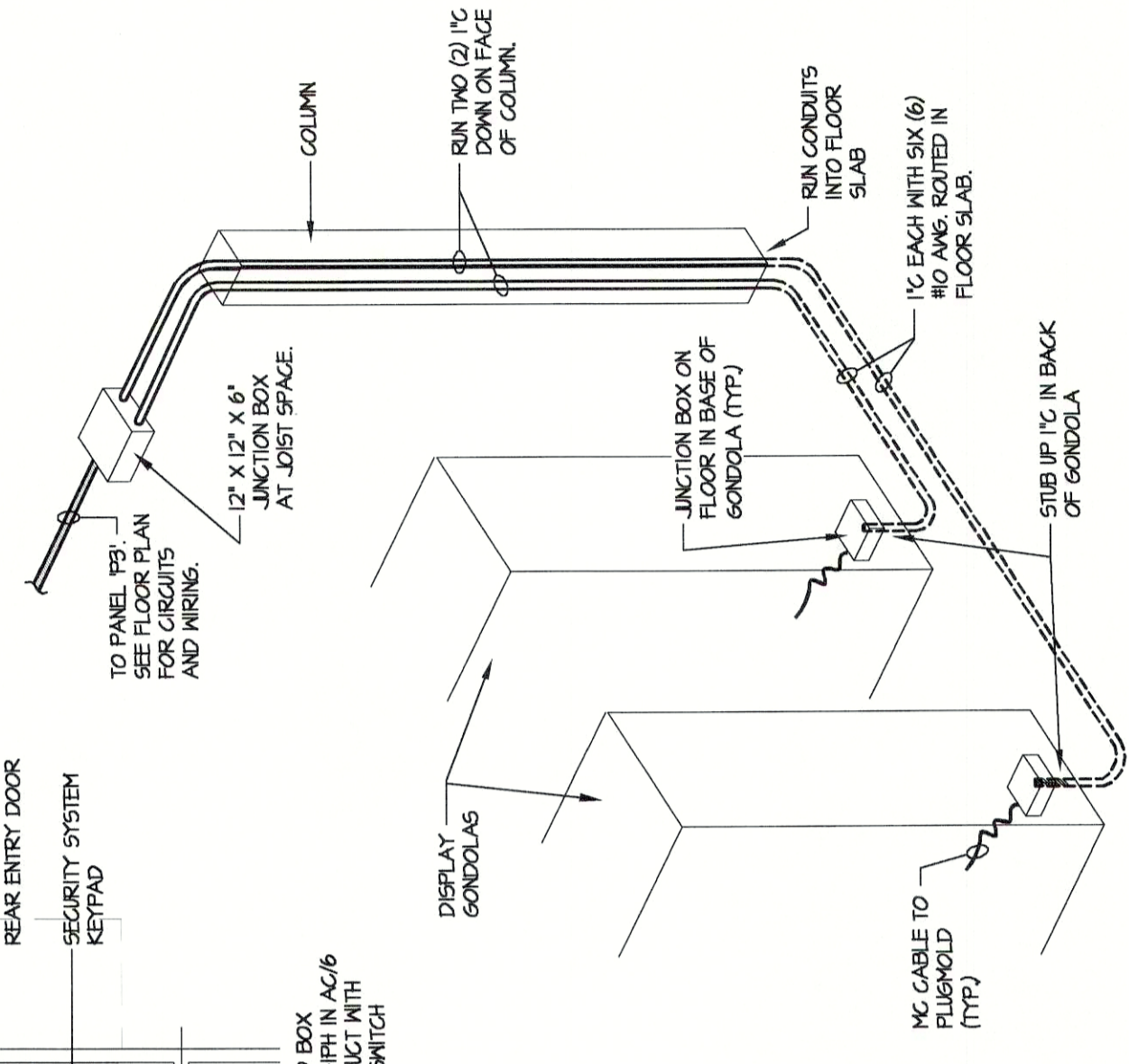
- A. AC UNITS ARE TO BE FINISHED WITH NON-FIBER DISCONNECT SWITCHES AND WEATHERPROOF TO THE OUTSIDE. THE WEATHERPROOFING IS TO BE AS SHOWN (TYPICAL OF AC UNIT THRU 3). E.G. TO PROVIDE WEATHERPROOF DISCONNECT SWITCH AND RECEPTACLE AS SPECIFIED ON DRAWINGS FOR AC-6 ONLY. PACKAGE SWITCH FROM VENDOR #21.
- B. ALL UNIT SIZES SHOWN ON PLANS FOR ROOF TOP AC UNITS ARE FOR REFERENCE ONLY AND ARE TO BE COORDINATED WITH MECHANICAL CONTRACTOR.
- C. E.G. SHALL PROVIDE AND INSTALL PLASTIC LAMINATED WEATHERPROOFING TO THE OUTSIDE OF THE AC UNIT. NOTIFY STORE MANAGER WHEN LIGHTED FOR AC UNITS 1 THRU 6 (ALL AC UNITS).

PLAN NOTES:

- A. ALL RECEPTACLES ARE TO BE NEMA 5-20R UNLESS NOTED OTHERWISE.
- B. SEE ARCHITECT'S DETAILS FOR INSTALLATION OF ALL IN-SLAB FLOORPLUGS (TYPICAL).
- C. SEE SHEET #E3 FOR ELECTRICAL SYMBOL LEGEND AND POWER PLAN CODED NOTE DESCRIPTIONS.
- D. SEE SHEET #E4 FOR PANEL SCHEDULES AND ONE-LINE DIAGRAM.
- E. SEE FIRE ALARM SYSTEM SYMBOL LEGEND ON SHEET #E6 FOR FIRE ALARM DEVICES SHOWN ON THIS PLAN.

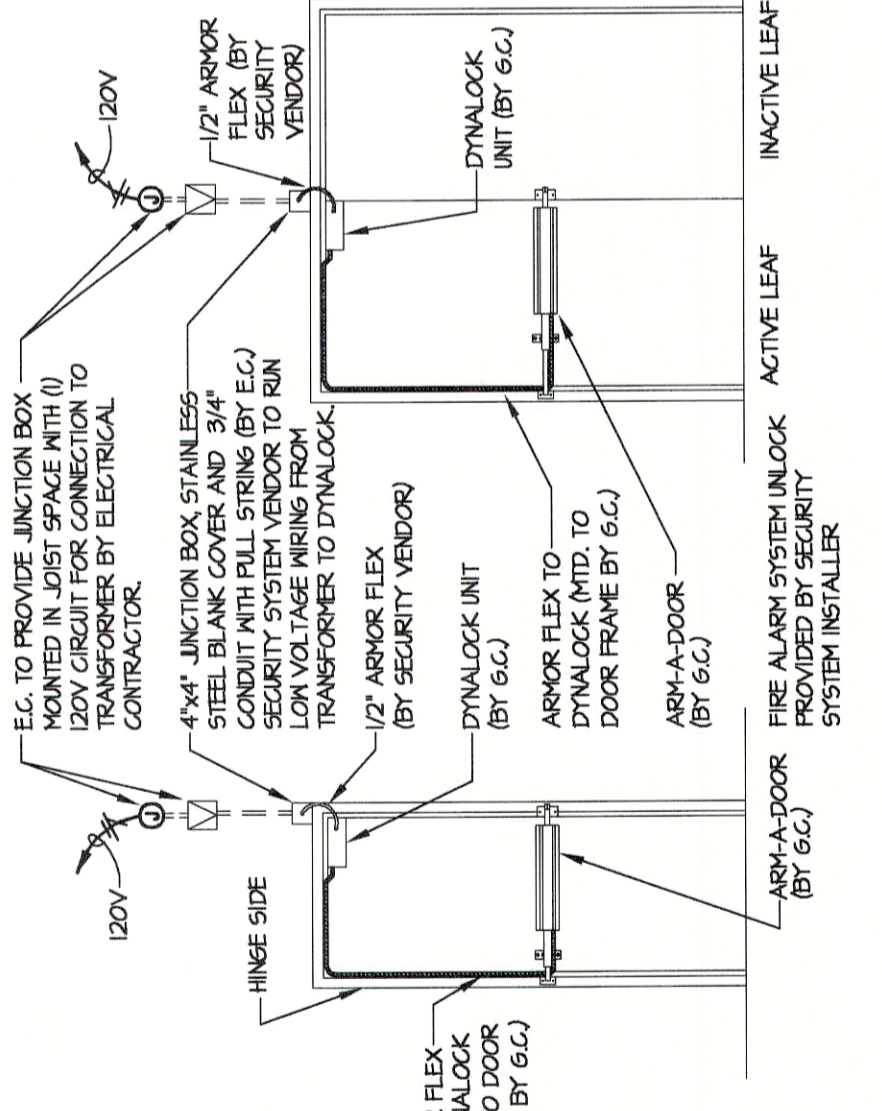
POWER FLOOR PLAN
 SCALE: 1/8"=1'-0"

SEISMIC DATA
 DESIGN OF MECHANICAL, ELECTRICAL AND PLUMBING EQUIPMENT RESTRAINT SYSTEMS FOR WIND / SEISMIC FORCES SPECIFIC FOR THIS PROJECT LOCATION SHALL BE BY MASON INDUSTRIES, INC. OR EQUAL MANUFACTURER AND AS REQUIRED FOR ALL APPLICABLE CODES.
 SEISMIC DESIGN CATEGORY - D
 SEISMIC DESIGN GROUP - I, II, III
 SEISMIC USE GROUP - I
 WIND DESIGN WIND SPEED FACTOR - 1.0
 SITE CLASS - D
 REFER TO STRUCTURAL DRAWINGS FOR ADDITIONAL PROJECT SEISMIC DESIGN INFORMATION.
 NOTE:
 A. REFER TO SPECIFICATIONS FOR SEISMIC VIBRATION CONTROL INFORMATION.



GONDOLA STUB-UP DETAIL
 N.T.S. SEE CODED NOTE #22

CONTRACTOR MUST VERIFY ALL CLEARANCES AND DIMENSIONS IN FIELD



SINGLE & DOUBLE DOOR SECURITY DETAILS
 N.T.S.